

# How to use Wegovy<sup>®</sup> (semaglutide injection)

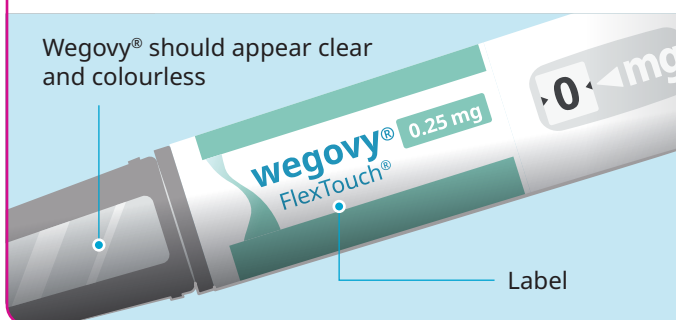
This material is intended for adult patients in Great Britain who have been prescribed Wegovy<sup>®</sup> (semaglutide injection). This information does not replace the Patient Information Leaflet (PIL), which you are advised to read in full. It is not intended as a substitute for clinical advice provided by your healthcare professional. Please contact your healthcare professional if you have any questions about your treatment and for clinical advice. Please refer to the PIL found in the product carton for further information on Wegovy<sup>®</sup>, further information on how to use Wegovy<sup>®</sup> and a full list of side effects, warnings and precautions.

## Reporting side effects

▼ This medicine is subject to additional monitoring. This will allow quick identification of new safety information. If you get any side effects, talk to your doctor, pharmacist or nurse. This includes any possible side effects not listed in the package leaflet. You can also report side effects directly via the Yellow Card Scheme at <https://yellowcard.mhra.gov.uk/> or via the 'MHRA Yellow Card' app in the Google Play or Apple App Store. By reporting side effects, you can help provide more information on the safety of this medicine. Side effects can also be reported to Novo Nordisk in the following ways: **Online:** <https://www.novonordisk.com/patients/report-a-side-effect.html> | **Telephone:** 0800 023 2573

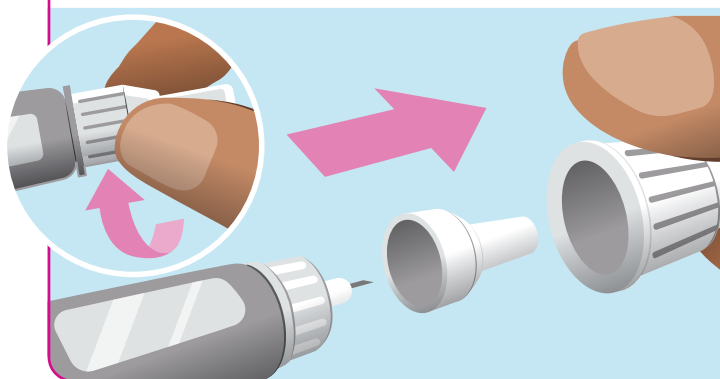
Wegovy<sup>®</sup> FlexTouch<sup>®</sup> pen is a dial-a-dose pen that contains four of your prescribed doses of Wegovy<sup>®</sup>, to be used once a week for four weeks. Before you begin using your once-weekly Wegovy<sup>®</sup> FlexTouch<sup>®</sup> pen, always carefully read the instructions provided in the PIL found in the product carton. Always use this medicine exactly as your doctor has told you. Check with your doctor, pharmacist or nurse if you are not sure. The illustrations shown below are of the 0.25 mg Wegovy<sup>®</sup> FlexTouch<sup>®</sup> pen<sup>®</sup>.

## 1 Check your Wegovy<sup>®</sup> pen



- Check the name and dose of the pen to make sure it contains your prescribed dose of Wegovy<sup>®</sup>
- Pull off the pen cap. Check that Wegovy<sup>®</sup> in the pen window is clear and colourless
- Do not use the pen if Wegovy<sup>®</sup> looks cloudy or coloured

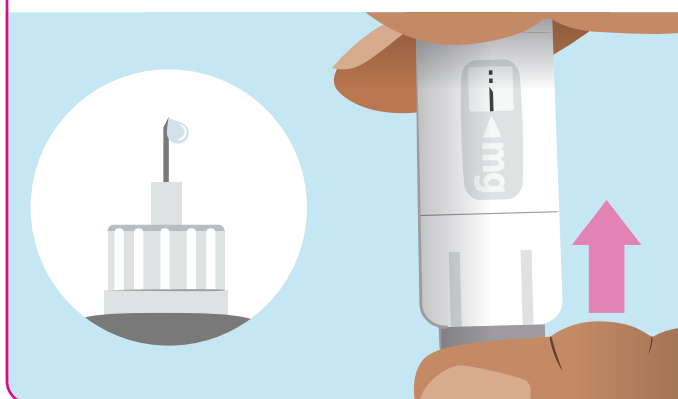
## 2 Attach a new needle



- Always use a new needle for each injection
- Tear off the paper tab from the needle and push straight onto the pen, then twist the needle until it is secured tightly
- The needle is covered by two caps – you must remove both caps
- Use a different needle if the paper tab or outer cap is damaged
  - Pull off the outer needle cap and keep it for later
  - Pull off the inner needle cap and dispose of it

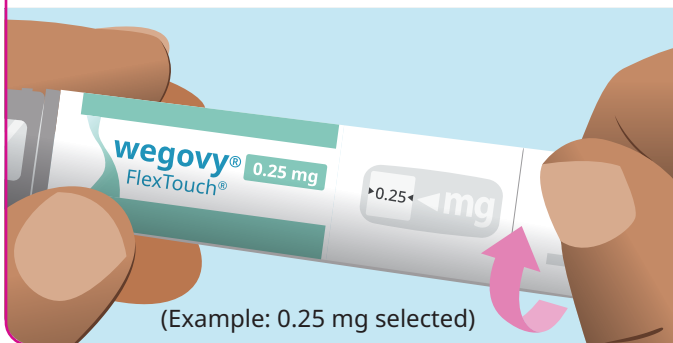
## 3 Check the Wegovy<sup>®</sup> flow with each new pen

Only check the Wegovy<sup>®</sup> flow before your first injection with each new pen. If your Wegovy<sup>®</sup> pen is already in use, go straight to step 4 'Set the dose'



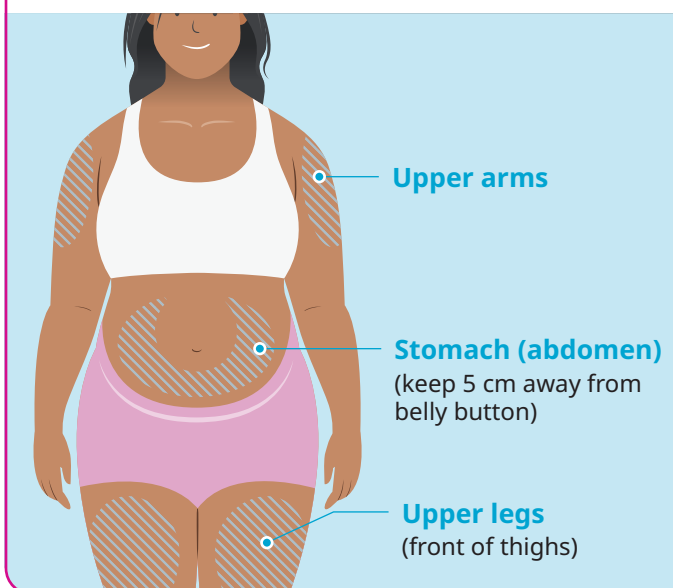
- Turn the dose selector until the flow check symbol (■ ■ ■) lines up with the dose pointer
- Hold the pen with the needle pointing up, then press and hold in the dose button until the dose counter returns to -0-
- A drop of Wegovy<sup>®</sup> should appear at the needle tip – this means that the pen is ready for use
  - If a drop does not appear, check the flow again. This should only be done twice
- Do not use the pen if a drop of Wegovy<sup>®</sup> still does not appear

#### 4 Set the dose



- Turn the dose selector until the dose counter stops, and it shows your prescribed dose
- If the dose counter stops before you reach your dose, there is not enough for a full dose. Use a different pen

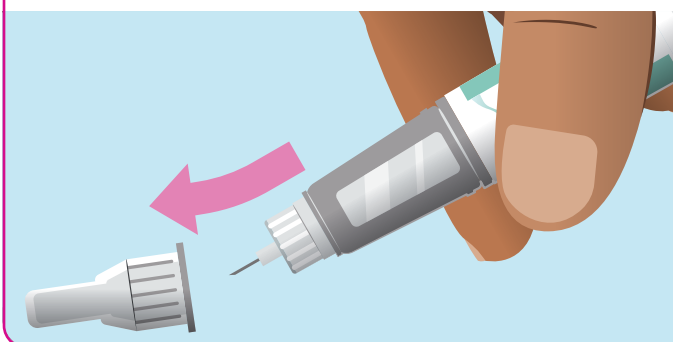
#### 5 Choose an area of your body to inject Wegovy®



Wegovy® is given as an injection under the skin (this is known as a subcutaneous injection). Do not inject it into a vein or muscle. You can choose to inject Wegovy® in one of the areas shown on the left hand side (upper arms, stomach or upper legs). You can inject in the same body area each week, but make sure it is not in the same spot as used the last time.

- Inject the needle into your skin, and make sure the dose counter is visible
- Press and hold down the dose button until the dose counter shows -0- by slowly counting to six
- You may hear or feel a click when the dose counter returns to -0-
- Remove the needle from your skin (if you find any blood appearing at the injection site, press lightly on the area to stop the bleeding)

#### 6 After your injection



- Lead the needle tip into the outer needle cap on a flat surface without touching the needle
- Once the needle is covered, carefully push the outer needle cap completely on and unscrew the needle
- Put your pen cap on after each use to protect Wegovy® from light

### How to dispose of your needles and pens

When the pen is empty, dispose of the pen without a needle on as instructed by your doctor, pharmacist, nurse or local authorities. The pen cap and the empty carton can be disposed of in your household waste.

Always dispose of the needle immediately after each injection using a sharps bin. Never store your pen with the needle attached. Keep your sharps bin in a safe place so it's not a risk to other people and is out of the sight and reach of children.

Sharps bins must not be disposed of in household waste. Discuss with your healthcare professional the procedure for disposing of sharps bin in your area.